

GREAT MINCE P22

WMG-P22

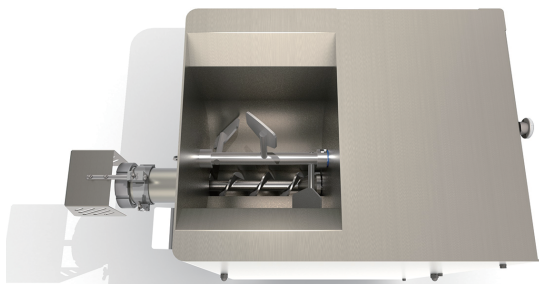


The Great Mince Series Now Features the Long-Awaited Paddle Type!!



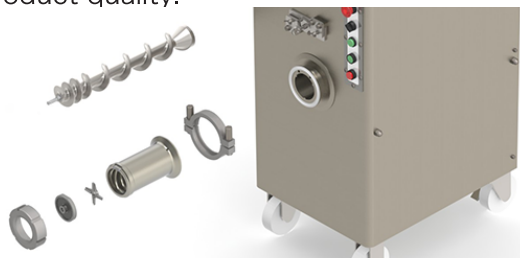
Improved Productivity

Equipped with a 50 L large-capacity tub and paddle, achieving enhanced productivity. (Including meat tray.)



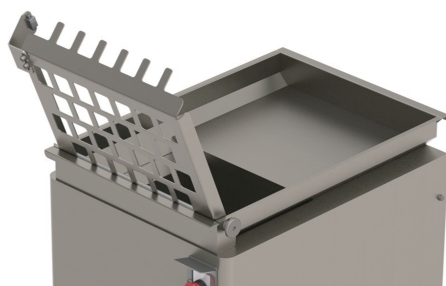
Excellent Freshness Retention

Inheriting the advanced technology of the Great Mince Series, Watanabe's unique special roll prevents over-grinding, maintaining the meat's natural color and moisture for superior product quality.



Safety

All opening sections are equipped with interlock mechanisms, ensuring complete safety during operation.



Sanitation

Washable design! The paddle, cylinder, and roll can be easily attached and removed, making cleaning quick and hygienic.



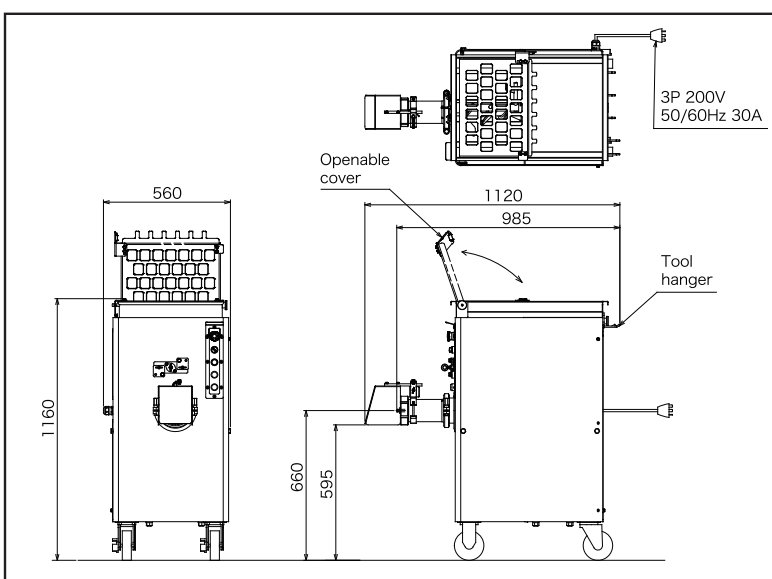
Foot switch (Optional)



SPECIFICATIONS

DIMENSIONS	W1,120*L560*H1,160mm
WEIGHT	260 kg
TAB CAPACITY	50 L (Full Capacity) Including meat tray
CAPACITY	600kg/hr (Theoretical max)
PROCESSING TEMPERATURE	-4°C~0°C (Depends on product)
RATED ELECTRIC CAPACITY	OUTPUT 3.8kW CURRENT 16.1A (50/60Hz w/o load)
POWER CONSUMPTION	0.58kW/0.5kW (50/60Hz w/o load)
POWER SUPPLY	3Phase 200V 50/60Hz More than 30A

DIMENSIONS PLEASE CHECK APPROVED DRAWING FOR FURTHER DETAILS.



WATANABE
WATANABE FOODMACH CO.,LTD.

2-12-26 TSUYUHASHI NAKAGAWA-KU NAGOYA JAPAN
TEL052-361-8511 FAX052-361-8490
URL : <https://www.foodmach.co.jp/>

SALES AGENT